

PRACTICAL INFORMATIONS

Adress: ARRESØCENTRET
Auderød Byvej 4
DK-3300 Frederiksværk

Train: Copenhagen - Hillerød - Frederiksværk

Bus connection: Line 367: Frederiksværk - Auderød
Line 319: Frederikssund - Frederiksværk
Line 324: Hillerød - Frederiksværk

MORE INFORMATIONS:

Birgitte Rose, Frejasvej 4, DK-3400 Hillerød
Tel: +45 48 25 39 87, E-mail: br@arresoe.dk

www.arresoe.dk



Facts about the
green activity centre
in North Zealand
Denmark



ARRESØCENTRET
KFUM-scouts in Denmark
www.arresoe.dk - part of Europe For You! - programme



ARRESØ SCOUT CENTRE is placed in the quiet and beautiful surroundings of Arrenæs, app. 3 km from Frederiksværk, nearby forests and directly at Arresø, which is the biggest lake in Denmark.

ARRESØ SCOUT CENTRE is one of the many scout centres in Denmark supporting the scouts with camps and trainings courses.

ARRESØ SCOUT CENTRE is a four winged farm "Ellehavegaard" with 22 acres land. The farm is owned by the Forrest and Nature administration in Denmark and is used by the YMCA-Scouts, the districts in the northern part of Sealand. Two wings can be booked. The Main house and the East wing. The wings can be rented separately or together and have rooms for app. 50 persons each. Both are equipped with fine kitchen facilities, toilets and shower rooms. There are rooms for meetings and audiovisual aids are available.

The campsite is divided into small sites for camping and bigger for activities. There are many facilities at the camp site like a building with activity materials, lath-yards and water cocks. Also a building with toilets and shower rooms is located at the campsite.

ARRESØ SCOUT CENTRE is a green centre, not only in the name of green, but also the way it is run. Cabbage sorting, alternative energy and saving of water are themes we not only talk about, but also use every day.

ARRESØ SCOUT CENTRE is a part of the programme *Europe for you*. A special training course for rovers concerning handicrafts is a part of the *Eurostep* programme.

It is also possible to be member of the staff during the summer through the European Scout Voluntary programme.



WHAT TO SEE

FREDERIKSVÆRK Museum for the factory for powder production
Town Museum

HUNDESTED Knud Rasmussens Museum
(Explorer of Greenland)

HILLERØD Frederiksborg Castle
The Museum for North Zealand

SØBORG Søborg Castle (Ruin)

HELSINGØR Kronborg Castle and the cathedral

LISELEJE Beach

COPENHAGEN Many things to explore

More informations: www.frvturist.dk.



Frederiksborg Castle in Hillerød

CENTRE CAMP

At the Arresø Scout Centre, centre camps are held in the school holidays from Saturday at 2 p.m. till Saturday at 12 a.m. primary at the campsite.



Introduction day

In springtime we have an introduction day for planning the details for the centre camp together with the leaders from the different groups.

Centre Camp Program

The leaders are requested to plan and carry out their programme for the whole day for their own scouts, but the activity description and the material is at hand and free to be used without extra charge. The staff at the centre will guide you in selecting and planning the activities. With special activities such as sailing and forging the staff will guide you through.

Common leader meeting

On the arrival at every centre camp, the staff at the centre will hold a common leader meeting to coordinate the various activities for the period, so the groups do not carry out the same activities at the same time. Also common activities such as campfire evening will be planned.

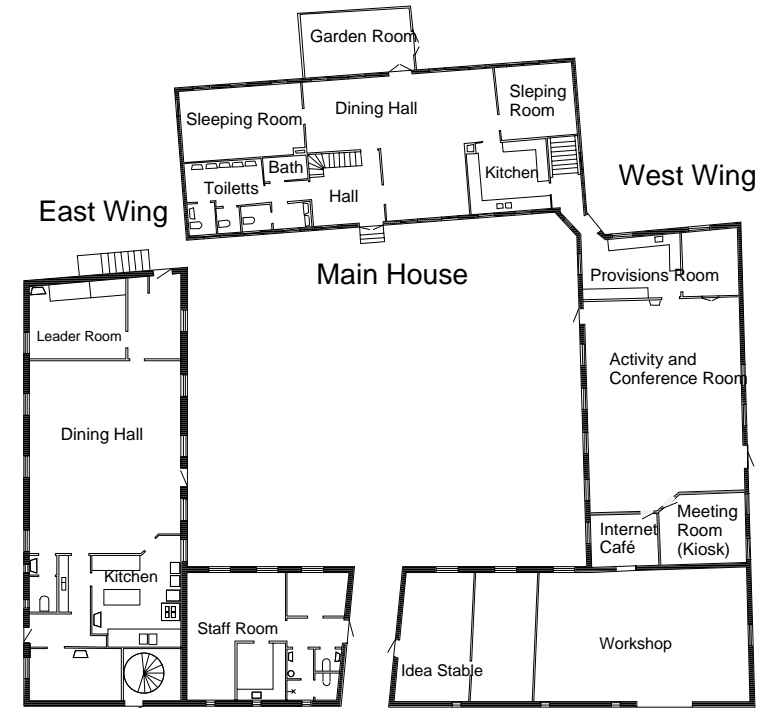


Provisions

The centre has an arrangement with a local store to deliver provisions. Besides that there are many possibilities for shopping in Frederiksværk.

Kiosk

Soda, sweets, ice, badges, T-shirts and mugs will be for sale. Opening hours will be coordinated at the leader meeting.



Staff Room

Residence for the staff.

Idea Stable:

Ideas and materials for activities. Open during your stay.

Workshop:

Open after arrangement with the staff.

West Wing:

Tables and chairs for 90 persons. West Wing is used for indoor activities. Incl. whiteboard, internet connection and AV-materials.

Internet Café:

Open after arrangement with the staff.

Provisions Room:

Is used by the group at the campsite. Installed with freezer, refrigerators and shelves for food to be kept. Coffee makers and water boilers are available.

Meeting Room:

With whiteboard. Is used for Kiosk during centre camps.

Internet:

Wireless Internet connection in all wings

Main House

This building has central heating except for the Garden Room.

Ground floor (Look figure at side 3):

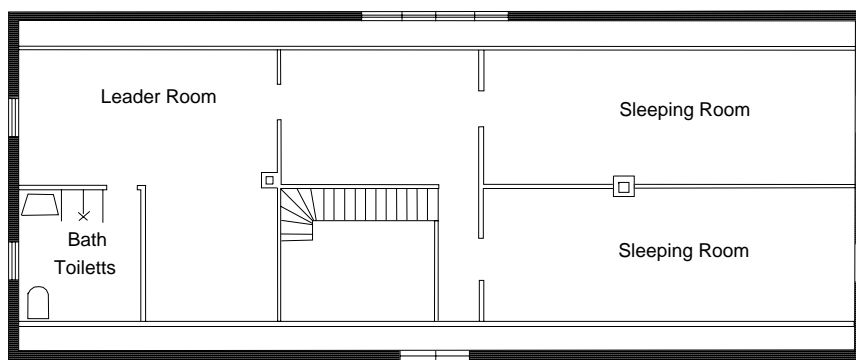
- Dining Hall: Tables and chairs for 50.
Garden Room: Tables and chairs for 12 (Indoor use only)
Kitchen: Crockery for 50 (Separate crockery at hand).
Gas cooker with oven, coffee maker, refrigerators, freezer and dishwasher.
Baths/Toilets: 3 wc's, wash basins og 2 showers.
Sleeping Room: Beds and Bunks for 7 and 12 persons.

1. floor:

- Sleeping Room: Two rooms with beds and bunks for 10 persons each and one leader room with beds and bunks for 9 persons.
Bath and toilet: Wc and shower.

PS! You must use sheet for the beds (You can rent it at the centre).

1. Floor Main House



In connection with the Main House there is a large garden with a flagpole (Danish flag available). Campfire places are at the campsite. Cause of the thatched roofs - use only barbeque etc. at the campsite. Large barbeque is available.

AKTIVITETER

Arresø Scout centre offers many interesting experiences. We have about 100 activities divided into different categories (please ask for the activity leaflet). Your group leader is responsible for carrying out your activity. In the school holidays the centre carry out special activities.

Traditional scouting:

The materiel for pioneering, hikes orienteering and sailing is available at the centre. You may build a raft to sail at the Arresø.

Sailing:

Here you learn to sail with different types of small sail boats. Is only available with instructor from the centre.



Nature and environment:

Nature trekking, studying small lakes etc.

Old handicrafts:

Especially in the school holidays as an activity, we do old handicrafts, such as forging, robe making and baking in oven.

Idea Stable:

Here we have detailed descriptions of all our activities. Beside that you find a big selection of books, periodicals and tourist information.

Materiel:

Besides all materiel for the activities, we have axes, saws and spades and so on. You can also rent a tent and other equipments for camping.

Information og courses and events - look up www.arresoe.dk.

THE CAMPSITE

At the campsite you will find

Lath yards
Woodsheds
Water cocks
Landing Stage
Barrels for building rafts



Common facilities

Campfire places
Flagpoles
Toilet building with showers
Store house for activity material

Activity places

Facilitated places for forging, baking in oven and robe making

TOILETBYGNING

The toilet building is divided into girls, boys and handi-capped sections with wc's, wash basins and showers with hot and cold water



East Wing

This building has central heating.

Ground floor (Look figure at side 3):

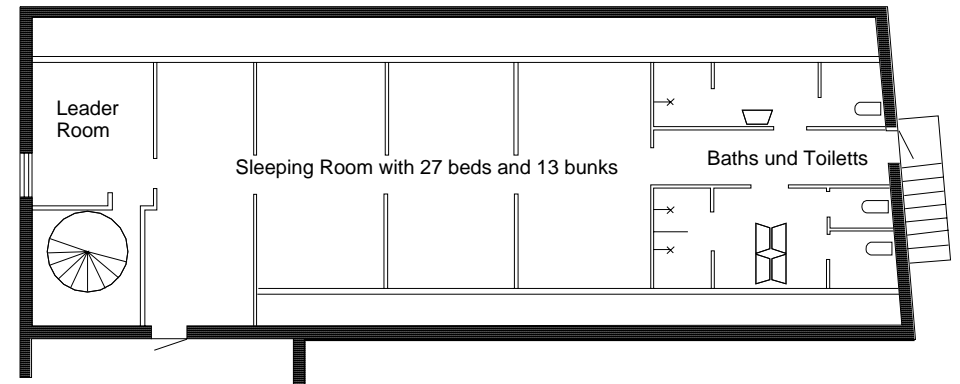
Dining Hall: Tables and chairs for 50.
Kitchen: Crockery for 50 (Separate crockery at hand).
Gas cooker, oven, coffee maker, refrigerators, freezer and dishwasher.
Kitchen entrance: For kitchen staff only.
Toilet: Wc and wash basin.
Leader room: Beds and Bunks for 6.

1. floor:

Sleeping room: 27 beds and 13 bunks divided into rooms without doors.
Leader room: 4 beds.
Bath og toilets: 3 wc's, 5 wash basins og 3 showers.

PS! You must use sheet for the beds (You can rent it at the centre).

1. Floor East Wing



In connection with the East Wing there is a large garden. Campfire places are at the campsite. Cause of the thatched roofs - use only barbeque etc. at the campsite. Large barbeque is available.



- A Ellehavegaard
- B Private
- C Private
- D Carbage yard
- E Water and firewood
- F Water
- G Baths + Toilets
- H Sailor House
- I Activity House
- J Campfire place
- K Smithy
- L Place for service
- M Lathyard
- N Landing stage
- O Backing oven
- P Carpark
- Q Shelters

